

# Biscayne Bay Coastal Wetlands Phase 1 Cutler Wetlands Flow-way October 16, 2024

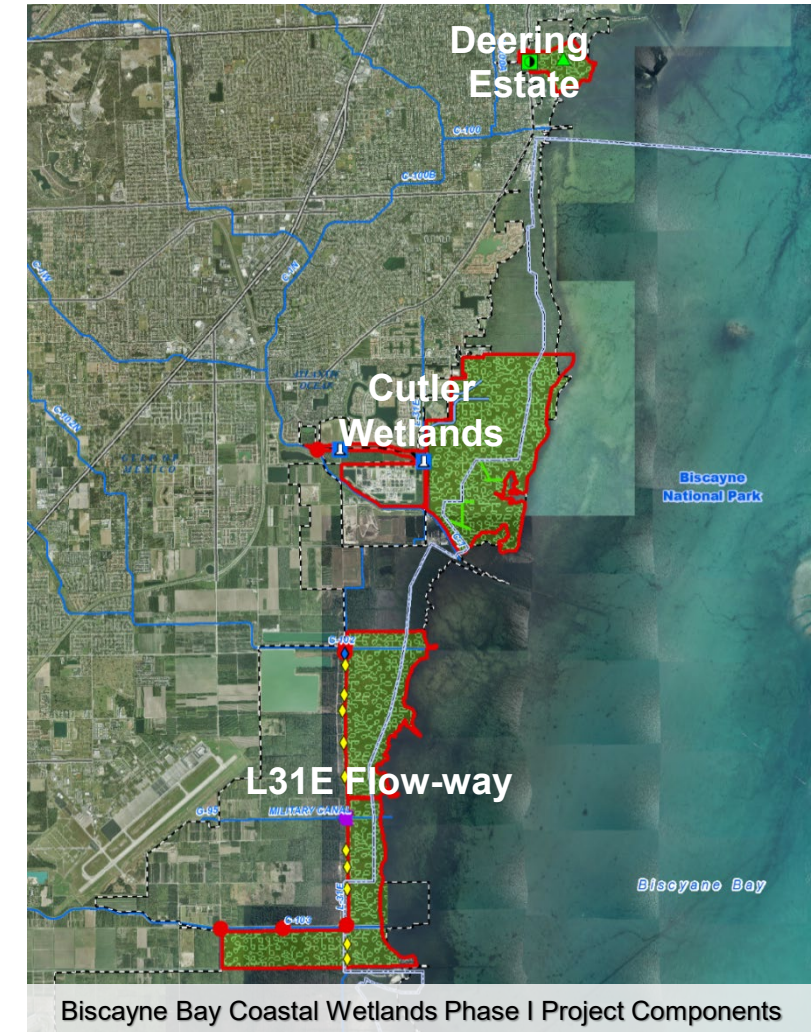
Nicole Niemeyer  
Ecosystem Restoration Planning Bureau

Tehran Scriven  
Engineering & Construction Bureau



# Biscayne Bay Coastal Wetlands (BBCW) Phase 1

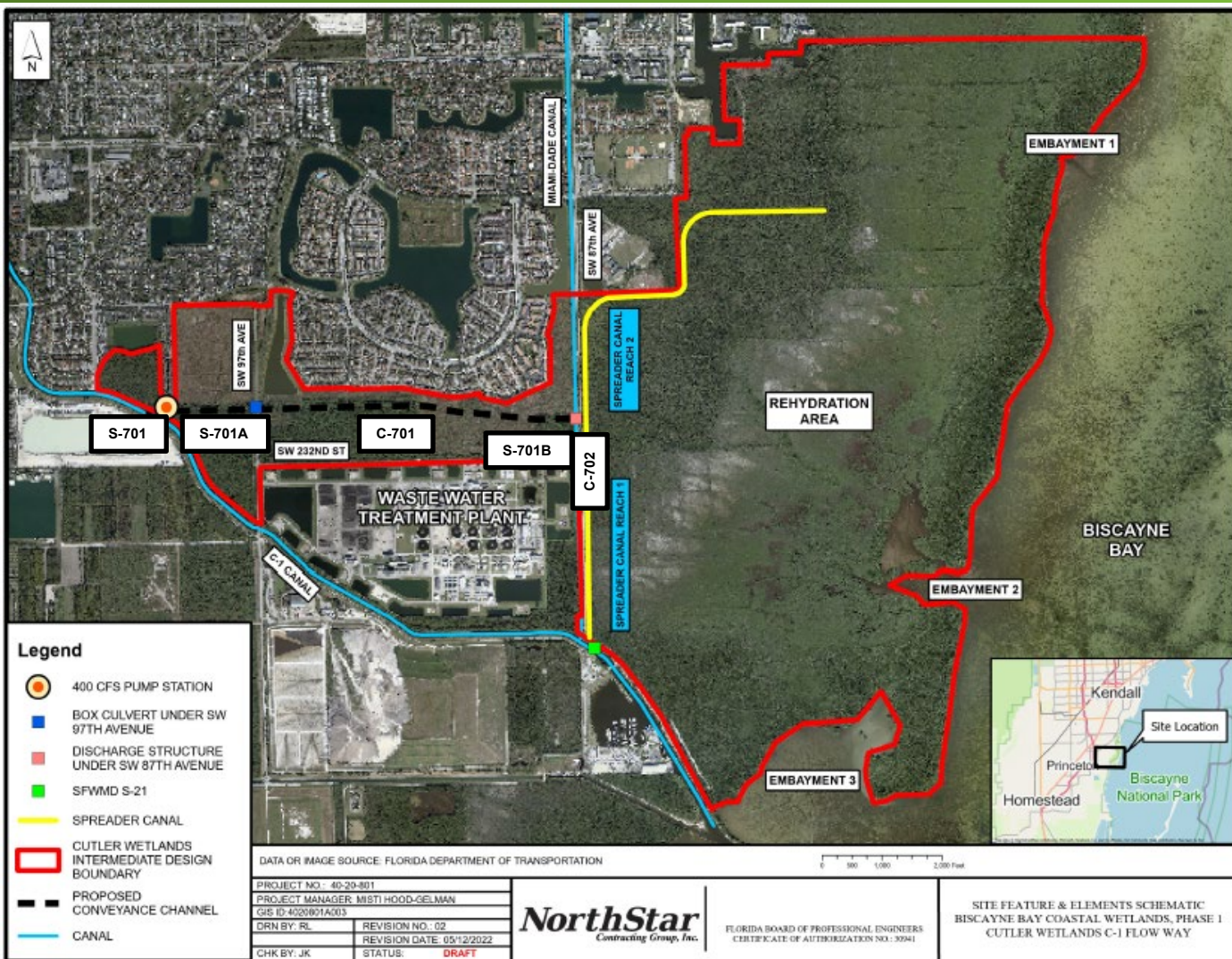
- Comprehensive Everglades Restoration Plan (CERP) Project
- Approved by Congress in WRRDA 2014
- 3 Project Components:
  - **Deering Estate** - SFWMD completed construction in 2012. The project is operational, and the results are positive.
  - **Cutler Wetlands** - SFWMD started construction of S-701 Pump Station in November 2022 and construction of the conveyance features in March 2024. Construction is expected to be completed in September 2025.
  - **L-31E Flow way** - Culverts are in place, remaining features under construction by USACE (S-703, S-710, S-711) or in the Operational Testing and Monitoring Phase (S-709 & S-705).



# BBCW Phase 1 Objectives

1. Redistribute freshwater flow to minimize point source discharges to improve freshwater and estuarine habitat.
2. Reestablish productive nursery habitat along the shoreline.
3. Preserve and restore spatial extent of natural coastal habitat.
4. Restore nearshore and saltwater wetland salinity regimes.
5. Restore and improve quality, quantity, timing, and distribution of freshwater to Biscayne Bay, including Biscayne National Park.

# Cutler Wetlands Project Features

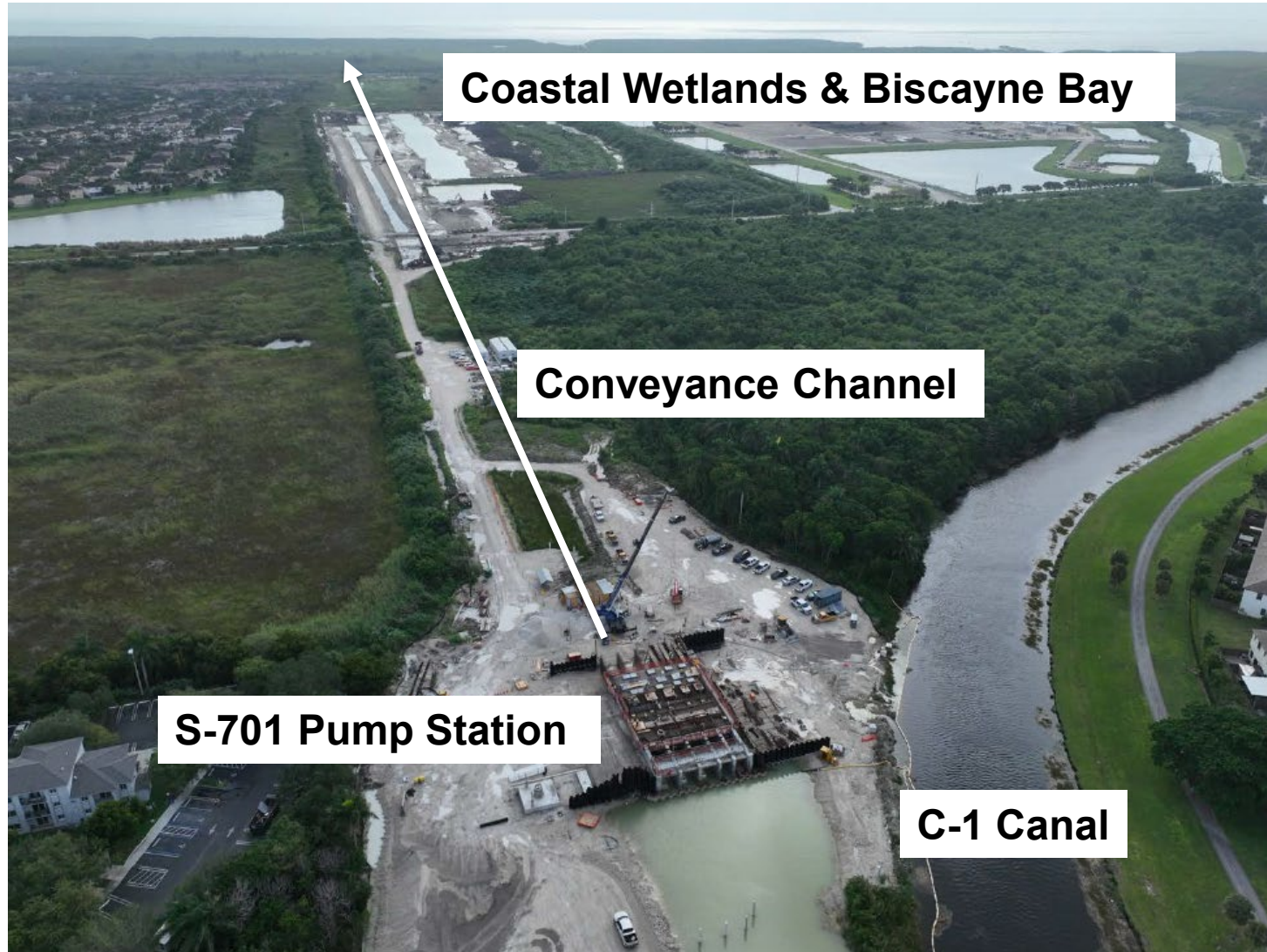


- S-701 Pump Station - 400 cfs
- S-701A Box Culvert under SW 97<sup>th</sup> Ave.
- C-701 Concrete-lined Channel
- S-701B Micro-tunnel under SW 87<sup>th</sup> Ave.
- C-702 Spreader Swale to distribute flows to rehydration area

# Cutler Wetlands Schedule

Contract	Features	Milestone	Date
Phase 1	S-701 Pump Station	Governing Board Approval	September 2022
		Contract Executed	October 2022
		Construction Commenced	November 2022
		Construction Completion	August 2025
Phase 2	Conveyance channel, culvert, micro-tunnel, spreader, recreational features	Governing Board Approval	December 2023
		Contract Executed	January 2024
		Construction Commenced	February 2024
		Construction Completion	September 2025

# Cutler Wetlands Construction Progress



# S-701 Pump Station



- S-701 pump station substructure is completed, superstructure construction ongoing.
  - Construction is on schedule to be completed Fall 2025.

# S-701A Box Culvert

- Cleared and grubbed east and west of SW 97th Ave. for S-701A box culvert
- Excavated footprint of box culvert
- Dewatering of the box culvert excavation
- Implemented a full detour of SW 97th Ave. and partial road closure.





# C-701 Conveyance Channel

- Cleared and grubbed conveyance canal footprint east of SW 97th Ave.
- Dewatering canal footprint east of SW 97th Ave.
- Borrow pit excavation and stockpiling material east of SW Ave.
- Burning cleared vegetation east of SW 97th Ave.
- Installing levee fill for canal embankments east of SW 97th Ave.
- FPL installed permanent power poles and hardware



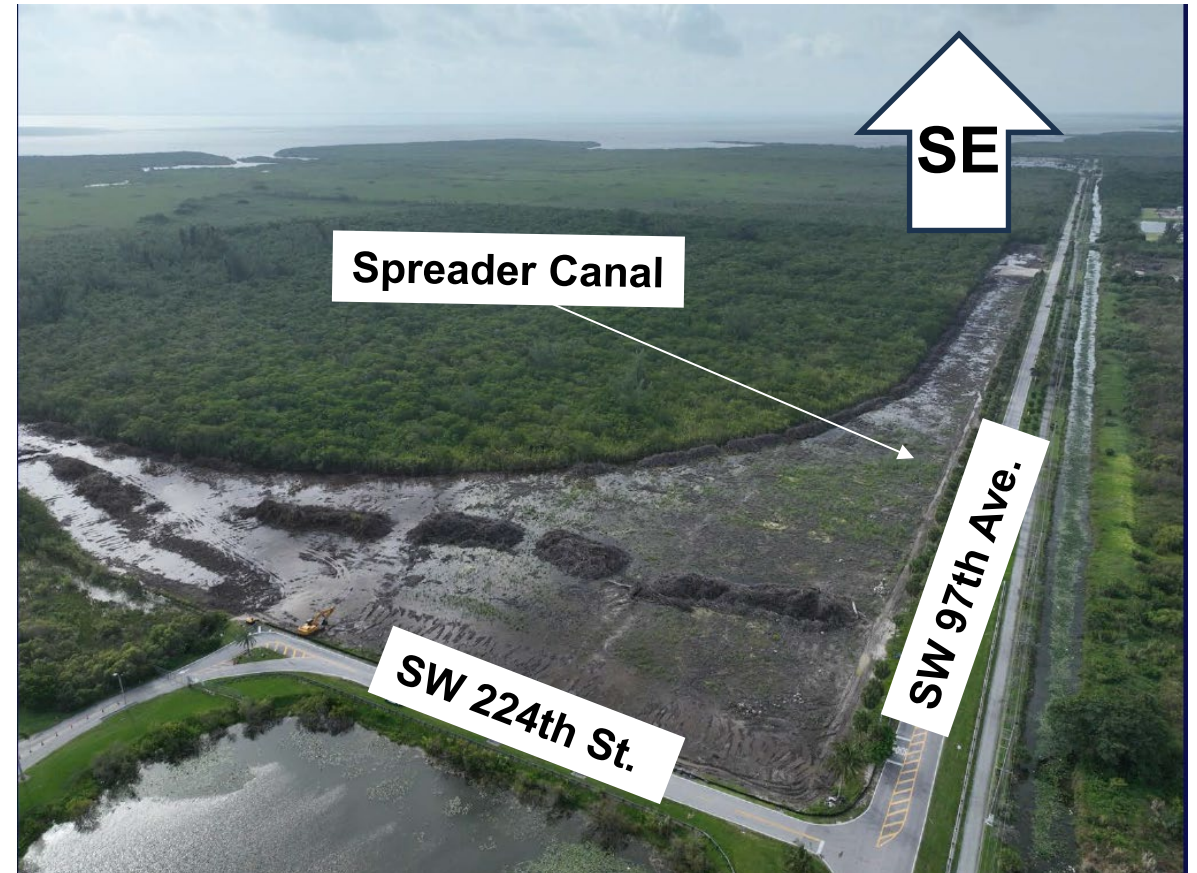
# C-701B Micro-tunnel

- Cleared and grubbed east and west of SW 87th Ave. for micro-tunneling
- Excavated footprint for cofferdam sheet piles west of 87th Ave.
- Installed permanent sheet piles west of SW 87th avenue for the micro-tunnel launch shaft, including wingwall sheets



# C-702 Spreader Canal

- Clearing and grubbing spreader canal east of SW 87th Ave.
- Stockpiling vegetative debris for removal.
- Pre-excavation of the cofferdam structure (receiving shaft) east of SW 87th Ave.



# Cutler Wetlands Recreational Features



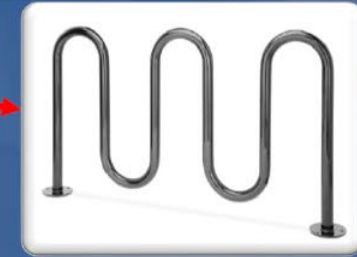
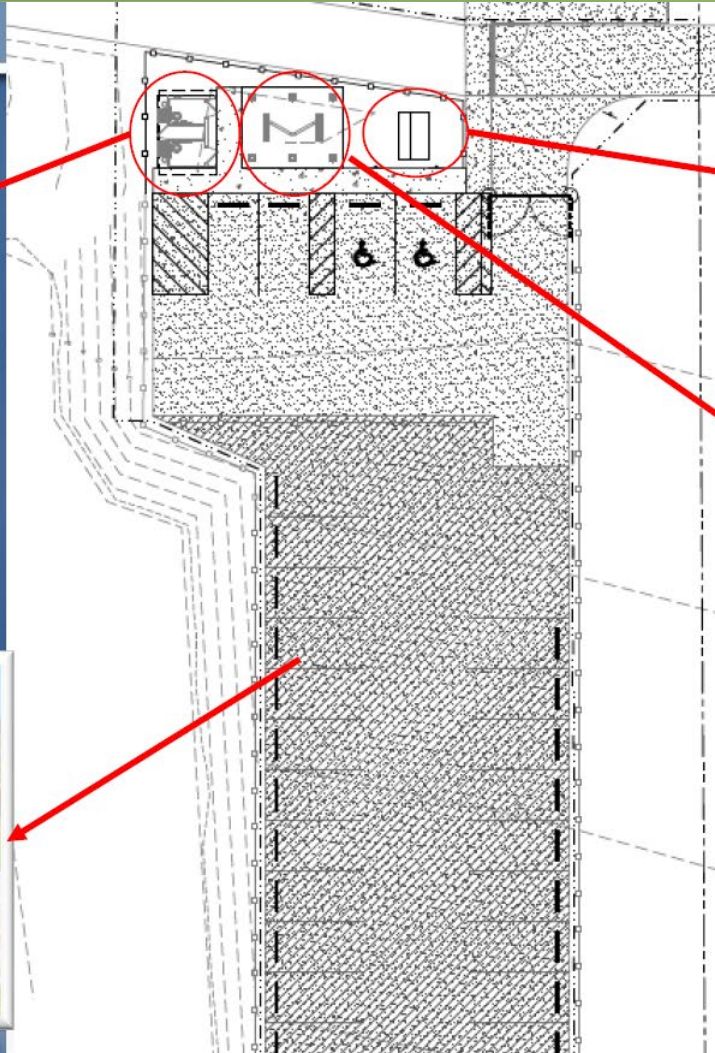
blind, Yatsu mudflat (Yatsu higata), Narashino Chiba Japan.



**Bird Watching Facility**

**Trail Head**

# Cutler Wetlands Recreational Features



# Cutler Wetlands Recreational Features



SW 97<sup>th</sup> AVE

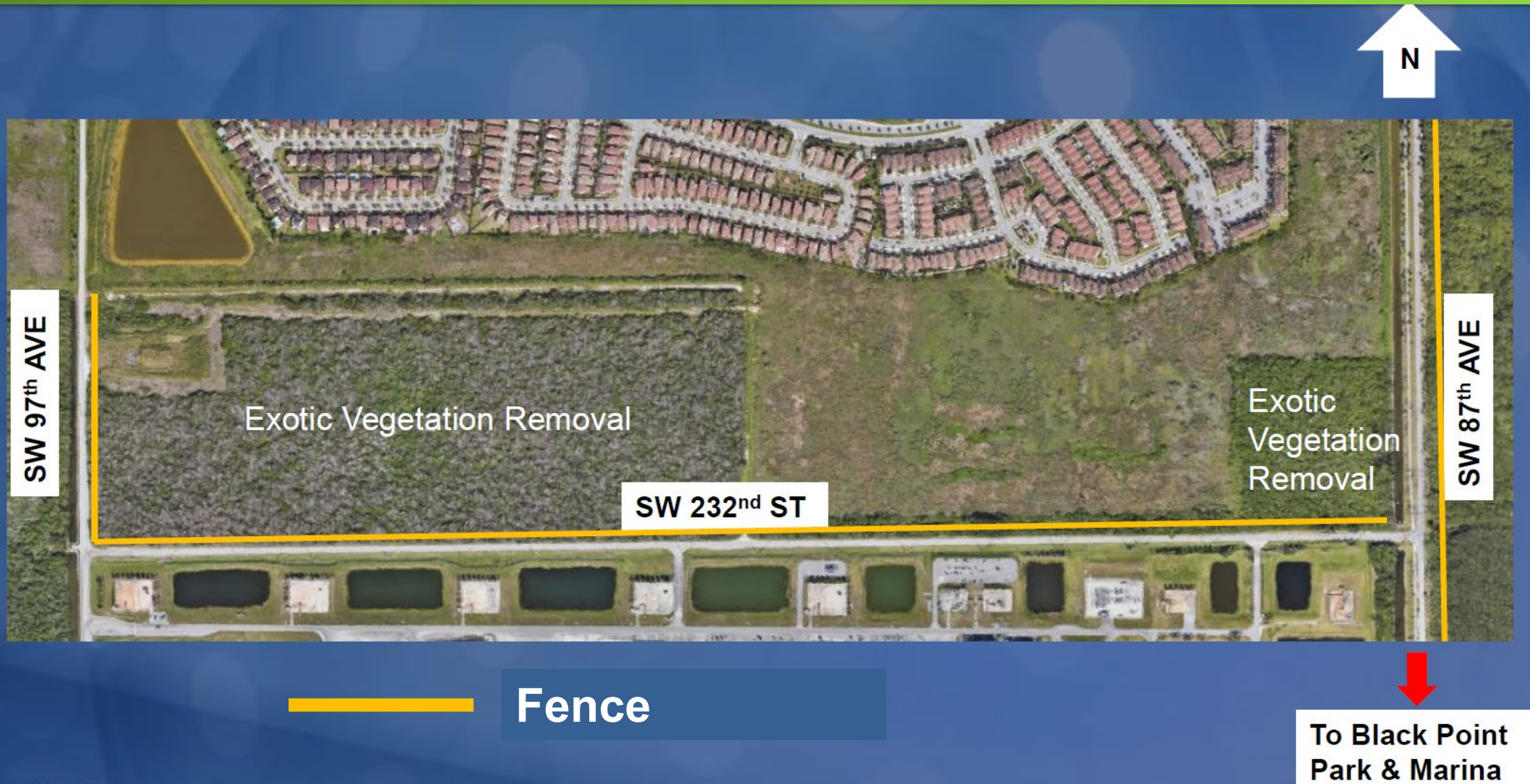
SW 87<sup>th</sup> AVE

SW 232<sup>nd</sup> ST

 Bike Path

  
To Black Point  
Park & Marina

# Cutler Wetlands Additional Benefits



# Contacts

Nicole Niemeyer

BBCW Project Manager

Ecosystem Restoration Planning & Project Management Bureau

[nniemeye@sfwmd.gov](mailto:nniemeye@sfwmd.gov) (561) 682-2108

Tehran Scriven

BBCW Construction Project Manager

Engineering & Construction Bureau

[tscriven@sfwmd.gov](mailto:tscriven@sfwmd.gov) (561) 682-6046



# Questions and Comments?

